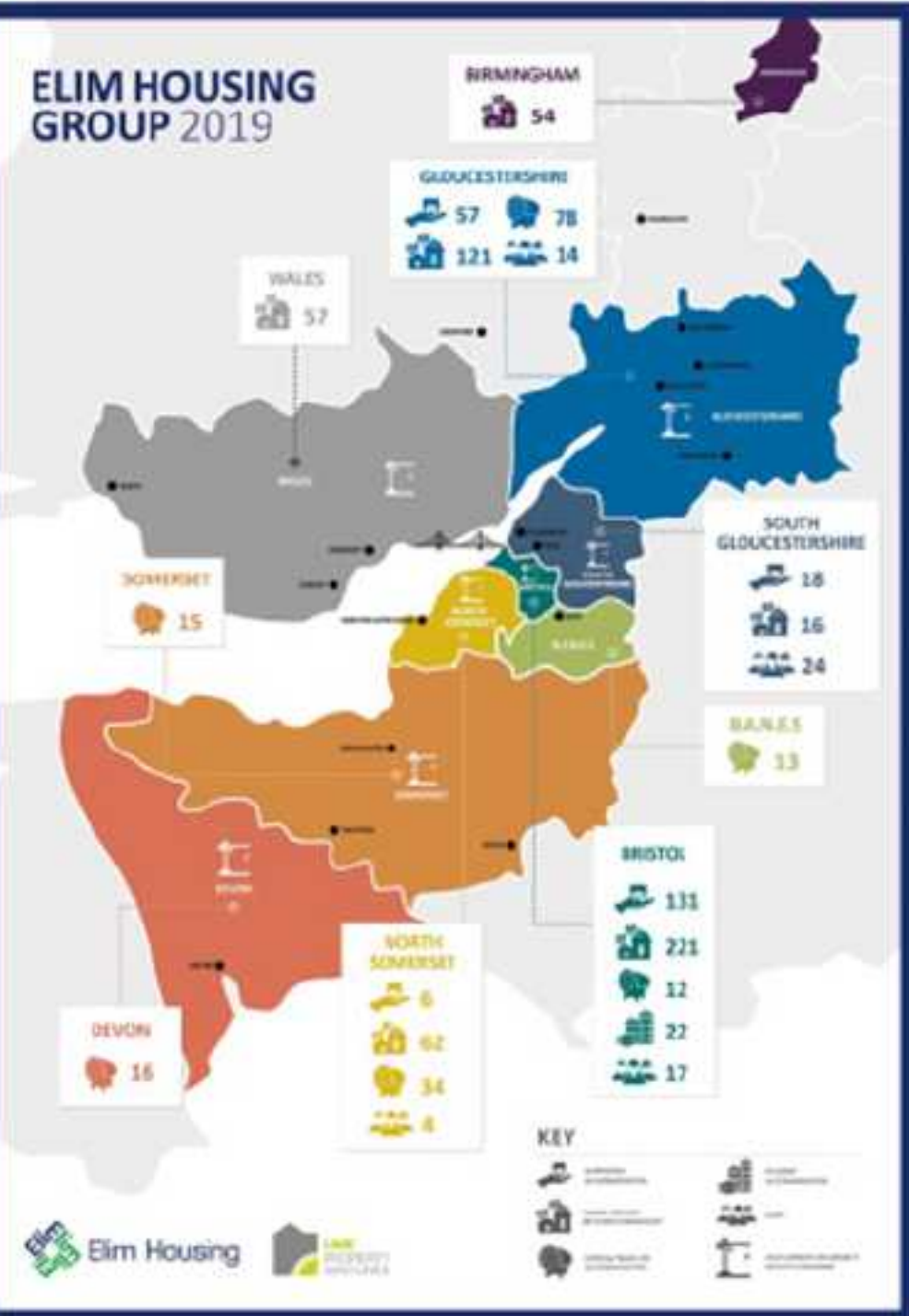


# Scaling Up Sustainable Housing in Bristol

Paul Smith, Chief Executive Elim Housing Group



900 Homes

500 general needs

250 supported housing &  
Homelessness

150 Gypsy & Traveller



# Bristol

- Population 465,000/745,000
- Homes 202,000/323,000
- Social Housing 40,000/53,000
- Employment Areas of note
  - Professional/scientific/technical 12.9% GB 8.9%
  - Finance/Insurance 6.5% GB 3.5%
  - Manufacturing 3.6% GB 8.0%
- Degree level or above (16-64yrol) 51.8% GB 43.1%
- Average Incomes £613pw GB £587pw



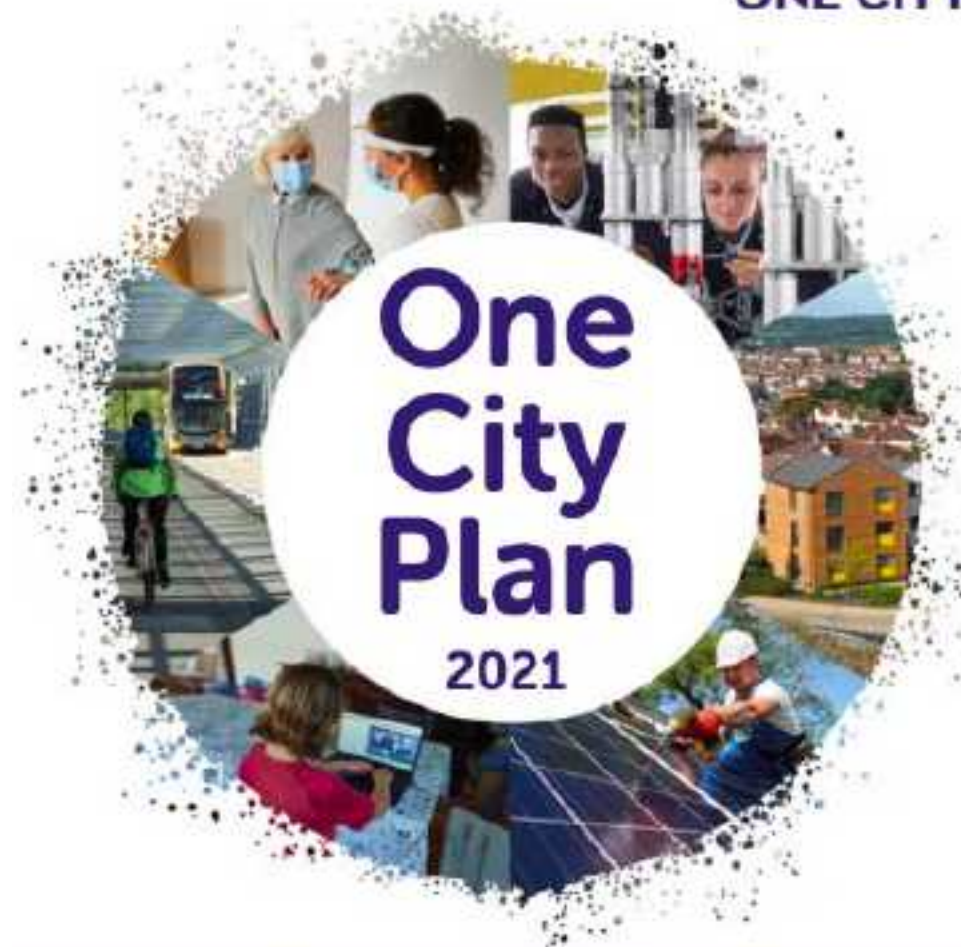
**"I'll build 2,000  
houses a year"**

 **Labour**  
labour.org.uk



**Vote Marvin Rees on the 5<sup>th</sup> May X**

**primesight**



### **A Plan for Bristol to 2050**

In 2050 Bristol is a fair, healthy and sustainable city. A city of hope and aspiration, where everyone can share in its success.



# SUSTAINABLE DEVELOPMENT GOALS







# We Can Make – Knowle West



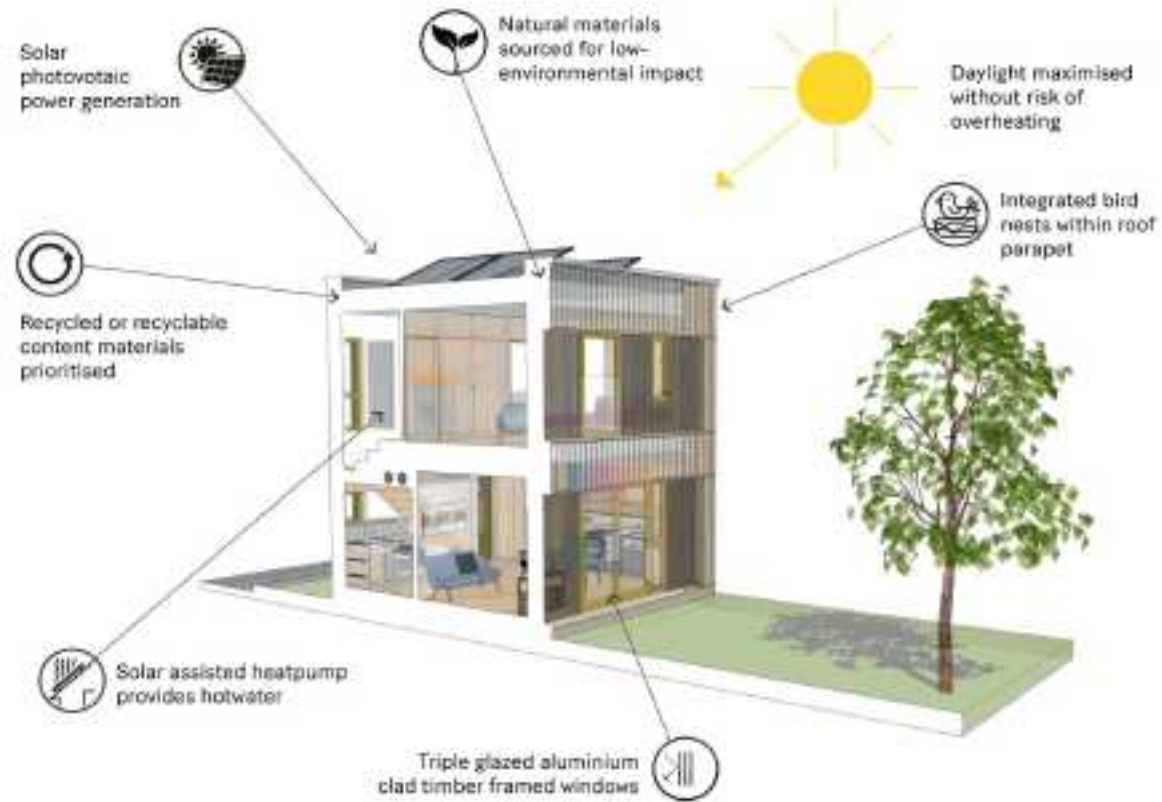


# BokLok on the Brook

- Council land
- 173 Houses and flats
- Affordable for families with incomes £15k-£35k
- 30% sold to council for social housing
- Community facilities & landscaping



# SNUG House/Ecomotive





# Legal & General Lockleaze

- 185 homes
- Council Land
- 50% as council social housing
- Community facilities, enlarged orchard



# Key take aways

- Importance of partnership working
- Access to public land, preferably free
- Grant aid for social housing element
- Link to existing communities/accessibility, services
- Use of sustainable materials
- Offsite manufacture of buildings
- Commitment to environment around homes